

# S2 NetBox™ Event Monitoring

Application Information for Version 4.0 and later

## Feature Summary

- Browser-delivered monitoring desktop presents all events
- User-created layouts for customized real time monitoring
- Animated, graphical floorplan shows location of active alarms
- Email and SMS text message generation on event activation
- Event behavior programmable by threat level
- Custom sounds and color coding quickly identify events
- One-click recall of recorded event-related video
- Video motion, video loss, and camera fail events
- Integrates common central station-monitored alarm panels
- Pop-up video display on event activation
- Extensive list of event-initiated actions
- Event initiation based on access control by location or access level
- Variable levels of supervision selected by input point
- Detailed responder instructions for each event
- Selectable event priority and action priority
- Programmable disarming of alarm panel on card access
- Programmable arm of alarm panel on inactivity
- Analog temperature-based event reporting and charting

## Overview

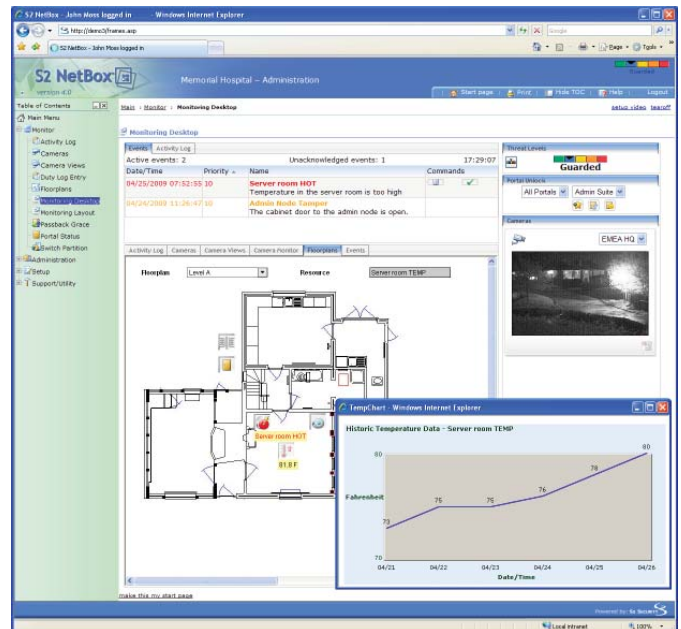
The S2 NetBox Event Monitoring function lets users respond electronically to inputs from the real world. These inputs are varied, ranging from simple contact closures to complex events such as video motion detection or communications loss. Virtual inputs such as loss of video at a camera, building occupancy limit exceeded, and temperature out of range are also supported. The system continually scans for changes in any of these inputs.

When a change is detected that is of interest to the user, a system event is triggered. Events let the user program a list of actions to be taken in response to the change. If the system is monitored, simple actions such as message and video display may be all that is necessary. Unmonitored systems may take advantage of built-in email transmission, text messages to cell phones, or other automatic actions - as if the system contained a set of built-in programmable logic controllers.

When events occur, users interact with the system through the Monitoring Desktop, a web browser-delivered display that provides access to event management functions and real time information including video and dynamic floorplan graphics. Beyond text, events arriving at the Monitoring Desktop for processing can generate sound, color-coded messages, and pop-up video.

Analog temperature monitoring points work with the event management system. Events can be initiated when temperatures exceed preset high or low values, and temperature values are easily displayed on floorplans to 0.5°C precision.

S2 NetBox also integrates central station-monitored alarm panels with its event management and access control systems. Alarms detected by alarm panels can be event sources. Card access by selected people can be used to disarm alarm panels. If the last



*Dynamic floorplan graphics show event and status data in real time. This example also shows temperature trend charting.*

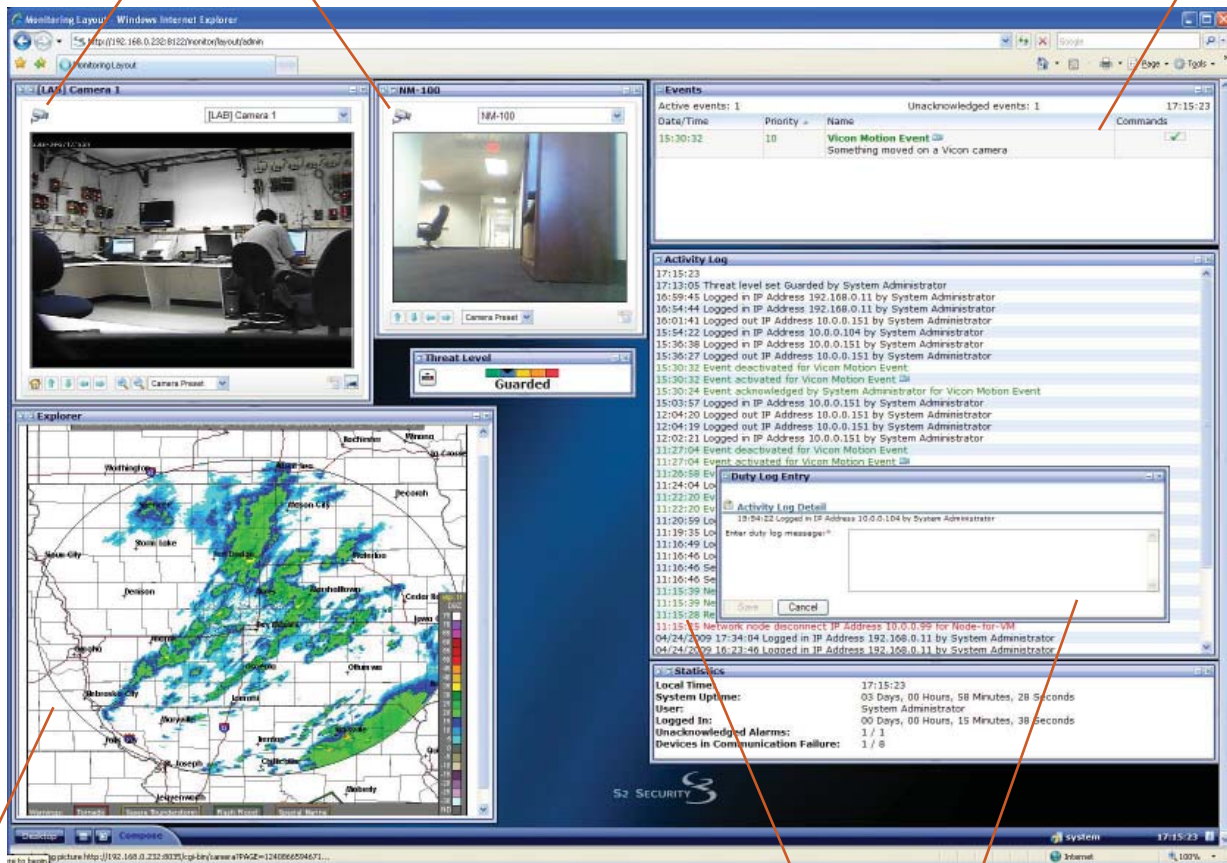
person to leave a facility fails to re-arm a panel, it can be easily armed remotely from the browser-based user interface, or the S2 NetBox can be programmed to prealert and then arm the panel automatically by time of day if no activity is detected.

Threat levels can be used to quickly change how the system reacts when events are detected. By changing a threat level, a facility can be immediately locked down or impose access control restrictions. Each action associated with an event can be individually tailored by threat level.

# Layouts and Widgets in Detail

Camera and monitor widgets let you build interactive video displays and video walls using a web browser. Simply click on the camera icon to transfer the image to a larger view.

Widgets, such as this event monitor widget, are windows that perform specific monitoring functions and can be customized by a privileged system user.



The explorer widget lets you access web content from the widget desktop. You can integrate local content or information from anywhere on the Internet and keep it updated by specifying a refresh interval.

The activity log widget shows real time system activity. Simply double-click on an entry to add commentary using an operator duty log widget.

Inputs per Input Application Blade	8
Outputs per Output Application Blade	8
Temperature points per temperature blade	8
Temperature probe operating range	-55° - +100°C
Temperature probe precision (-10° and +85°C)	± 0.5° C
Max length of cable run to temperature probe	1000 feet

Priority levels	20 (events); 20 (event actions)
Alarm actions	Lock, unlock portal, momentary unlock, Send email, SMS message Move camera to preset, initiate recording Activate, deactivate, pulse output/group, Set threat level, log event, Arm, disarm input group

## S2 Security Corporation

World Headquarters  
50 Speen Street  
Framingham, MA 01701 USA  
Tel: +1 508 663 2500  
Fax: +1 508 663 2512

## S2 Security ASIA

808, #04-151 French Road  
Kitchener Complex  
Singapore 200808  
Singapore  
Tel: +65 65658916